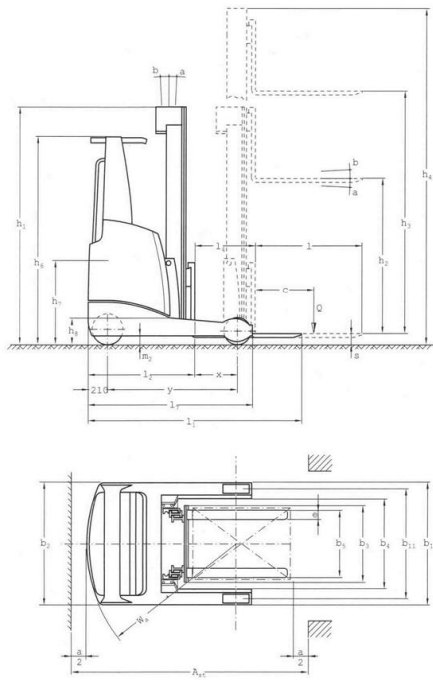


DATA SHEET

| | | | |
|-----|------------------------|-------------------------------|-----------------------|
| 1. | Manufacturer | | DEUTRUCK |
| 2. | Type | Model designation | EFSM 1400 N |
| 3. | Carrying capacity | Q | t 1,4 |
| 4. | Load centre | C | mm 600 |
| 5. | Type of drive | Diesel, petrol, l.p. gas | electric |
| 6. | Operator type | stand on / driver seated | driver seated |
| 7. | Tyre | C=cushion, P=pneumatic | VULCOLLAN |
| 8. | Wheels (driven) | number front / rear | 1 x / 2 |
| 9. | Lift | h3 standard lift height | mm 5.000 |
| 10. | Lift | h2 standard free lift | mm 1.648 |
| 11. | Lift | h5 special free lift | mm |
| 12. | Fork | Length x width x thickness | mm 1.150 x 80 x 40 |
| 13. | Tilt angle | Forward a backwards b | (° 2 / 4 |
| 14. | Dimensions | L2 Length with fork thickness | mm 1.229 |
| 15. | Dimensions | B Width | mm 1.125 |
| 16. | Dimensions | h1 Mast standard lowered | mm 2.195 |
| 17. | Dimensions | h4 Mast standard extended | mm 5.563 |
| 18. | Turning radius | Wa Outer | mm 1.671 |
| 19. | Load distance | x from center or front axle | mm 423 |
| 20. | Aisle for 90° stacking | | mm 2.718 |
| 21. | Stability factor | DIN standard 15138 (F.E.M.) | Yes |
| 22. | Speeds | Travel laden / unladen | km / h 11/ 11 (14/14) |
| 23. | Speeds | Lift laden / unladen | m / s 0,37 / 0,63 |
| 24. | Speeds | Lower laden / unladen | m / s 0,55 / 0,55 |
| 25. | Drawbar pull | At the hook laden / unladen | N |
| 26. | Gradeability | Laden / unladen | % 12 / 15 |
| 27. | Weight of truck | with battery | kg 3.270 |
| 28. | Axle loadings | unladen front / rear | kg 1.980 / 1.290 |
| 29. | Axle loadings | laden front / rear | kg 572 / 4.098 |
| 30. | Tyres | No. front / rear | 2 / 1 |
| 31. | Tyres | dimensions front | “ or mm 343 x 114 |
| 32. | Tyres | dimensions rear | “ or mm 285 x 100 |
| 33. | Wheel base | Y | mm 1.410 |
| 34. | Track width | center wheels front / rear | mm 1.136 / 0 |
| 35. | Ground clearance | m1 at the deepest point | mm 75 |
| 36. | (laden) | m2 at center of wheelbase | mm 75 |
| 37. | Brakes | Service brake | mech. /hydr. |
| 38. | Brakes | Parking brake | mech. |
| 39. | Battery | Type | PzS |
| 40. | Battery | Volt / Ah cap. (55 hrs. rate) | V / AH 48 / 420 - 775 |
| 41. | Electric motors | drive motor | kW 6,4 AC |
| 42. | Electric motors | lifting motor | kW 14 AC |
| 43. | | | |
| 44. | | | |
| 45. | | | |
| 46. | | | |
| 47. | | | |
| 48. | | | |
| 49. | Speed control | | Mosfet / AC |
| 50. | Noise level | | dB (A) 68 |
| 51. | | | |
| 52. | Operating pressure | | N 150 |

*valid for standard version as per VDI 2198 – subject to modification without notice

Version 04/2020



Fahrerschutzdach für „EINFAHRREGAL“
 Overhead guard for „DRIVE-IN“ racks
 Toit de protection pour rayonnage „ACCUMULATION“

