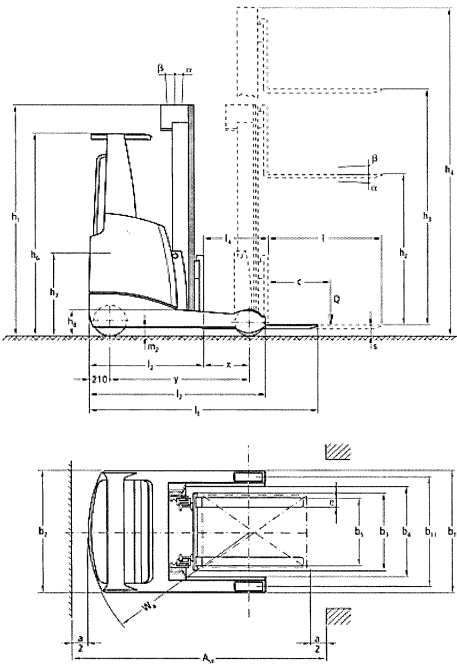


## DATA SHEET

1.	Manufacturer		DEUTRUCK
2.	Type	Model designation	EFSM 1600N
3.	Carrying capacity	Q	t 1,6
4.	Load centre	C	mm 600
5.	Type of drive	Diesel, petrol, l.p. gas	electric
6.	Operator type	stand on / driver seated	driver seated
7.	Tyre	C=cushion, P=pneumatic	VUL / VUL
8.	Wheels (driven)	number front / rear	2 / 1
9.	Lift	h3 standard lift height	mm 2.900 to 10.250
10.	Lift	h2 standard free lift	mm 80
11.	Lift	h5 special free lift	mm 40
12.	Fork	Length x width x thickness	mm 1.150 x 120 x 50 or 1.000
13.	Tilt angle	Forward a backwards b	(°) 1 / 5
14.	Dimensions	L2 Length with fork thickness	mm 1.268
15.	Dimensions	B Width	mm 1.125
16.	Dimensions	h1 Mast standard lowered	mm 2.300
17.	Dimensions	h4 Mast standard extended	mm 3.500 to 10.900
18.	Turning radius	Wa Outer	mm 1.663
19.	Load distance	x from center or front axle	mm 395 / 205
20.	Reach distance	l4	mm 600
21.	Aisle for 90° stacking	1.000 x 1.200 / 800 x 1.200	mm 2.715 / 2.4687 2.668 / 2.762
22.	Stability factor	DIN standard 15138 (F.E.M.)	Yes
23.	Speeds	Travel laden / unladen	km / h 14 / 14
24.	Speeds	Lift laden / unladen	m / s 0,44 / 0,70
25.	Speeds	Lower laden / unladen	m / s 0,50 / 0,50
26.	Drawbar pull	At the hook laden / unladen	N
27.	Gradeability	Laden / unladen	% 15 / 10
28.	Weight of truck		kg 3.070
29.	Axle loadings	unladen front / rear	kg -
30.	Axle loadings	laden front / rear	kg -
31.	Tyres	No. front / rear	1x / 2
32.	Tyres	dimensions front	“ or mm 285 x 100
33.	Tyres	dimensions rear drive	“ or mm 343 x 114
34.	Wheel base	Y	mm 1.460
35.	Track width	center wheels front / rear	mm 1.136
36.	Ground clearance	m1 at the deepest point	mm
37.	(laden)	m2 at center of wheelbase	mm 55
38.	Brakes	Service brake	electr..
39.	Brakes	Parking brake	hand
40.	Battery	Type	PzS
41.	Battery	Volt / Ah cap. (55 hrs. rate)	V / AH 48 / 480-775
42.	Electric motors	drive motor	kW 7,0
43.	Electric motors	lifting motor	kW 14
44.	I.C.engine	Manufacturer / type	
45.	I.C.engine	Continous output to DIN 6270	R.P.M.
46.	I.C.engine	At engine speed (DIN 6270)	kW
47.	I.C.engine	Fuel consumption	l / h
48.	I.C.engine	Strokes / no. of cyl / cap	(cm3)
49.	Clutch		
50.	Speed control		
51.	Noise level		dB (A) 66
52.	Drive axle		
53.	Operating pressure		N 150

\*valid for standard version as per VDI 2198 – subject to modification without notice

Version 04/2020



Fahrerschutzdach für „EINFÄHREGAL“  
 Overhead guard for „DRIVE-IN“ racks  
 Toit de protection pour rayonnage „ACCUMULATION“

